



INDIANA

New

OTOÑO-INVIERNO / AUTUMN-WINTER / AUTOMNE-HIVER / HERFST-WINTER / HERBST - WINTER / AUTUNNO-INVERNO

45

60% Acrílico / Acrylique / Acrylic / Acryl / Acrilico
40% Algodón / Coton / Cotton / Baumwolle / Katoen / Cotone

± 50 grs. / 1 oz ³ / ₄ ± 115 mts / 125 yds.								



61



60



66



62



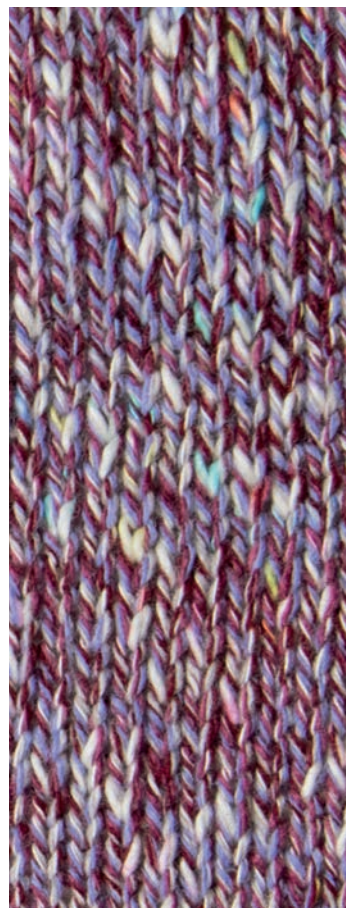
63



65



64



67



68



69